



BERKSHIRE HATHAWAY
HomeServices
Georgia Properties

COMMERCIAL DIVISION

FOR LEASE

**1,800 s.f dental/medical/
general office**

**Move your business to
iconic Green Street
*When visibility matters***



615 Green Street, Gainesville

Marketed By:

Brent Hoffman

Berkshire Hathaway Home Services GA Properties
500 Jesse Jewell Pkwy., SE Suite 300
Gainesville, GA 30501
Direct- 770-533-6721
Office – 770-536-3007
Brent@BrentHoffman
www.BrentHoffman.com





BERKSHIRE HATHAWAY
HomeServices
Georgia Properties

Property Information

FOR LEASE \$3,100 per month

COMMERCIAL DIVISION



Rear area parking access—50 +spaces

Historic tree lined Green Street - when visibility and location matter.

- ◆ Beautiful 2 story Office building
- ◆ 3 operatories—2 built out
- ◆ Large reception room
- ◆ 2 private offices
- ◆ Elevator access
- ◆ Small lab room
- ◆ Another room for tech, gas, sink etc
nice storage closet with lots of shelves
- ◆ 2 large handicap accessible restrooms

- ◆ Potentially one large extra office may be available
- ◆ Gas and water plumbed for dental - space in basement for compressor.
- ◆ Parking for 50 shared—plenty
- ◆ 3 access points—Green St., Simmons St., North Ave.
- ◆ This well known address on Green Street sits with other redeveloped office mansions along Gainesville most coveted road.

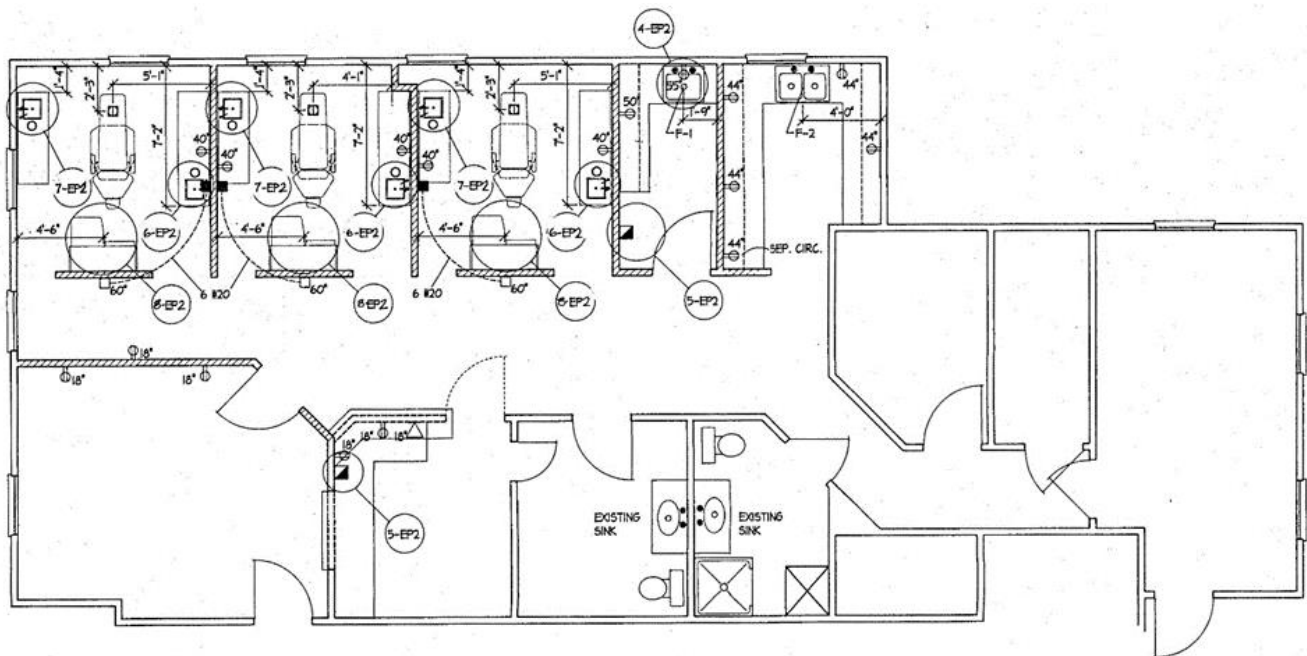
See Property Webpage at: [615 Green Street \(brenthoffman.com\)](http://615GreenStreet.brenthoffman.com)



Large reception area for patients and visitors



One of two offices - - with private exit on one





BERKSHIRE HATHAWAY
HomeServices
Georgia Properties

COMMERCIAL DIVISION

Location Map



North on I-985 to exit 22. Left towards Gainesville approx. 1.93 miles.

Continue on Hwy 129/E.E. Butler through town. Road changes to Green Street.

Property on left. Located at the corner of Green St. & North Ave.

Convenient to
North Georgia
mountains and the
Atlanta market

